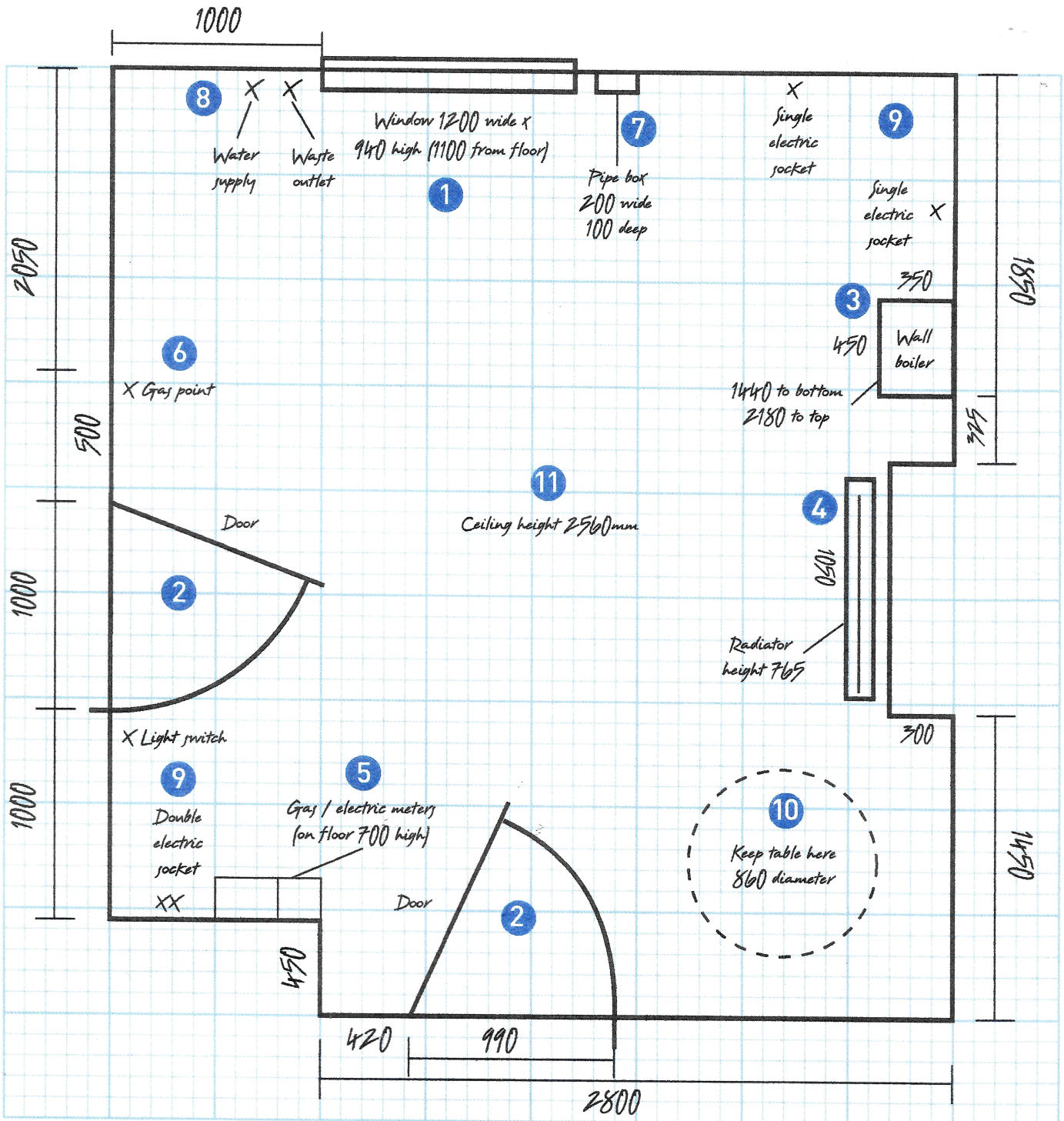


Sample Plan



Things to consider

- Measure all dimensions in millimetres
- Draw all walls first
- Then draw the doors and windows
- Show any obstacles on your plan such as radiators, boiler, gas or electric meter and boxed-in water pipes plus positions for switches and sockets

- Remember, the more measurements you give, the better

The example above shows a plan view of a room, highlighting the dimensions and positions of important features.

Key

- 1 **Window.** Draw windows in the correct positions and use the scale on the planner to accurately draw the length. Also specify: a) the height from floor to window sill b) the height of each window
- 2 **Door.** Draw doors in position and include the frame in the total width. Also include the handing or draw which way the door swings open. If no door is present (eg archway) show this on the plan.
- 3 **Boiler.** Measure your boiler and show on the plan if this is in the kitchen. Please specify the width and height from floor to the under side of the boiler (if wall mounted) and to the top of the boiler.
- 4 **Radiator.** Show, width, height and distance from wall of all radiators, including height from floor.
- 5 **Gas/electric meters.** Show position, width, height and distance from walls. If wall mounted, specify height from floor to the bottom and top of the meter(s).
- 6 **Gas point.** Show the location of any gas supply pipe.
- 7 **Boxed-in pipes.** These usually run from the ceiling down to either below worktop height or the floor. Show the width and depth of any box.
- 8 **Water supply/stop tap.** Usually under or near to existing sink, can be moved if necessary. Specify the location on the plan.
- 9 **Electric switches/sockets/cooker point.** Mark any sockets on the plan too. If a cooker point is currently in place this is a useful reference point. Sockets can be moved/added if necessary to suit the finalised kitchen plan.
- 10 **Table.** Show dimensions and where (if any) you require an existing or new table to be located
- 11 **Finally,** make sure you show the height of the ceiling. Measure this in a few places, if there is a slope (or beams) and detail this on the plan too.